

# Echoes Extra, April 10, 2016

**Our Savior's Lutheran Church, Rochester, MN**

8:00am Worship, ELW Setting One, Pg. 97

THANKSGIVING FOR BAPTISM ELW pg. 97

OPENING SONG *"At the Lamb's High Feast We Sing"* ELW 362  
vs. 1-3

HYMN OF PRAISE *"This is the Feast"* ELW pg. 101

PRAYER OF THE DAY

Holy and righteous God, you are the author of life, and you adopt us to be your children. Fill us with your words of life, that we may live as witnesses to the resurrection of your Son, Jesus Christ, our Savior and Lord, who lives and rules with you and the Holy Spirit, one God, now and forever. Amen.

ANTHEM *"Sing the Resurrection Song"* Sr. Choir

**WORD FOR ALL GOD'S CHILDREN**

PSALM 4 See page 2 of this publication

READING Luke 24:36-53

PROCLAMATION OF THE GOOD NEWS Pastor Fred Rengstorf

HYMN OF THE DAY *"With High Delight Let Us Unite"* ELW 368

**APOSTLES' CREED** ELW pg. 105

DISTRIBUTION HYMNS

*All are welcome at the Lord's table. White grape juice is available in the center of the communion tray. Gluten free wafers are available. Please let the server know of your preference.*

*"At the Lamb's High Feast We Sing"* ELW 362, vs. 4-7

*"Christ Is Alive! Let Christians Sing"* ELW 389

BLESSING & SONG *"Lord, You Let Your Servant"* ELW pg. 113

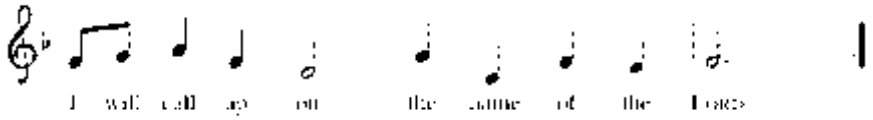
CLOSING HYMN *"At the Lamb's High Feast We Sing"* ELW 362  
vs. 8

---

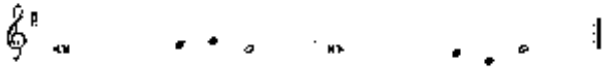
10:30am Worship  
Journey with Jesus PowerPoint

PSALM 4

Refrain:



Tone



<sup>1</sup> Answer me when I call, O God, defender | of my cause;  
 you set me free when I was in distress; have mercy on me  
 and | hear my prayer.

<sup>2</sup> **“You mortals, how long will you dishon- | or my glory;  
 how long will you love illusions and seek | after lies?”**

<sup>3</sup> Know that the LORD does wonders | for the faithful;  
 the LORD will hear me | when I call.

<sup>4</sup> Tremble, then, and | do not sin;  
 speak to your heart in silence up- | on your bed.

<sup>5</sup> Offer the appointed | sacrifices,  
 and put your trust | in the LORD.

<sup>6</sup> **Many are saying, “Who will show us | any good?”**  
 Let the light of your face shine upon | us, O LORD.

<sup>7</sup> You have put gladness | in my heart,  
 more than when grain and | wine abound.

<sup>8</sup> In peace, I will lie | down and sleep;  
 for you alone, O LORD, make me | rest secure.

**FELLOWSHIP HOUR TODAY WILL BE A “JUST BE” HOUR.**

Last week in his sermon, Pastor Ben said we are constantly busy ---  
**working, planning, achieving. We seldom take time to “just be.”** Well,  
 it so happened that we, the planners of the Adult Forum time did not  
 have anything planned for this Sunday. So we will do just that - -  
**today we will “just be.” No planning, no program, no project. Relax,**  
 enjoy. Roy Satre, one of the planners!

Altar Flowers are given to the glory of God from Katie Zahasky in honor of her parents.

Altar Flowers are given to the glory of God from Phil & Renate Shriner **in honor of Erik's 24th birthday.**

Remember in your Prayers:

Concerns: Sue Green-Nagel (Eberhart Family member); Darlene **Kukuczka (Bill Nicklay's cousin); Fred Jensen; Marsha Dick;** Karen Pflibsen

Military Concerns: Margaret & Catherine Maher; Paul Schroeder; Austin Nicklay; Clark Rose; Eric Brown; Scot Heathman, Ryan Nordstrom, Dan & Kelly Pickett, all our service men and women serving in the Military and of our veterans who have served.

Missionary Concerns: Patrick & Jacqueline Bencke in Japan  
The Palliative Care Program at Iambi Hospital, Tanzania  
Seminary: Nicholas Rohde

### WELCOME VISITORS!

*"Welcome one another, therefore, just as Christ has welcomed you, to the glory of God." Romans 15:7*

We welcome new visitors and old friends, long-time Lutherans, Christians from every tradition, and people new to faith. To those who have no church home, want to follow Christ, have doubts, do not believe, you are welcome here. Regardless of age, color, culture, sexual orientation, gender identity, socioeconomic status, marital status, abilities or challenges, join us, you are welcome here.

You are welcome to worship, to celebrate and sorrow, to rejoice and recover. This is a place where lives are made new.

WANT TO JOIN OSLC? If you are interested in becoming a member, please talk with Pastor Ben or Pastor Fred.

### CONTACT INFORMATION

Address: 2124 Viola Rd NE, Rochester, MN 55906

Pastor Ben Loven—[bloven@rochesterosl.org](mailto:bloven@rochesterosl.org); cell 701-580-1559

Pastor Fred Rengstorf—[pf@rochesterosl.org](mailto:pf@rochesterosl.org); cell 507-273-4939

Joanne Hamilton, Office—[office@rochesterosl.org](mailto:office@rochesterosl.org)

Carole Joyce, Family Ministry Consultant—[carole35@charter.net](mailto:carole35@charter.net)

Office—289-3021; Office Hours: M--F, 7:30am—4:00pm

Website: [www.rochesterosl.org](http://www.rochesterosl.org)

Prayer Chain Leaders: Ruby Florine 288-0138, Katie Zahasky 289-9365



**FAIR TRADE MEETING**

April 19th @ 6:30pm.

If you would like to help with the Fair Trade Market,

October 1-2, please join us at the meeting.

The OSLC high school youth will be sending CARE PACKAGES TO OUR COLLEGE STUDENTS in mid-April. If you want to donate, please leave your donations in the youth room. Please make sure they are clearly marked! Money is also a great way to donate – each box costs about \$13.00 to send. All donations are greatly appreciated!! (Any questions may be directed to Emily Block: [block.emily@mayo.edu](mailto:block.emily@mayo.edu) or 507-250-5769.)

**OUR SAVIOR’S LUTHERAN CHURCH WOMEN’S MEAL & MINDFULNESS**

Saturday, May 14, 2016,  
9:30-11:30 a.m.

**Our Savior’s Lutheran Church**

Fellowship Hall

Cynthia Harbeck-Weber will speak about mindfulness followed by a fun, relaxing coloring activity.

Brunch provided by Naomi Circle. All women and girls of OSLC are



Open House at GEV  
Sunday, April 24 2:00pm-5:00pm—Free Event for All Ages!

Explore our beautiful grounds, participate in beloved camp activities, meet some of the incredible summer staff members that will be working with your kids this summer, and get to know what brings this special place near to so many hearts.

Hikes, Games, Music, Snacks,  
Meet the Counselors, Prizes,  
Learn about Camp, Kid's Activities, Camp Tours & Wagon Rides

Pastor Fred plans to go to this and invites anyone interested:

- In going to camp this summer,
- In what the camp has to offer,
- In spending some time in a beautiful outdoor setting.

Sign up on the sheet on his office door.

SARAH CIRCLE INVITES ALL WOMEN to a special birthday party for our 90 year old women on April 18 at 1:00pm.

They will share a special time in their life.



MARCH/APRIL  
CONGREGATIONAL  
PROJECT

FLEECE TIED

BLANKETS—COORDINATED BY  
NAOMI CIRCLE

Bright, colorful, sturdy and warm, Fleece Tied Blankets are a soft, cozy reminder that someone cares. In a hospital room or on the hard ground, these handmade blankets provide protection and a sense of comfort.

What to Include

Guidelines

- Please give new items only, except where otherwise noted
- Please do not donate items with any religious symbols, messages or **your congregation's name.**
- Please do not donate any items decorated with a U.S. flag, patriotic or military symbols, or references to the armed forces, including camouflage.

Materials

- Two pieces of fleece 58" - 59" wide x 80" long

Everyone is welcome to join us in making the blankets. We will tie on April 18 at 9:00am in the Fellowship hall.

BREAKING THE CHAINS

Join us to learn how justice and restoration are making inroads to counter the human trafficking activates taking place in our area. Discover what is being done to break theses chains of oppression.

Thursday, April 14, 7-9pm  
Heintz Center Commons, RCTC

EDUCATION HOUR, 9:15am

April 10—Spring Break

April 17—New Life Event

April 24—Samaritan Bethany

Forum—The Buss Project

WEDNESDAY MEALS CONTINUE

Serving begins at 5:45pm with worship beginning at 6:30pm. Everyone is welcome.

4/13 sloppy joes

4/20 mac and cheese

4/27 lasagna

5/4 walking tacos

5/11 pulled pork sandwiches

5/18 chicken sandwich

5/25- no meal, end of school year

LUTHERLAND TRIP

September 12-21, 2016

Informational meeting on Monday, April 18, 7:00pm at The Waters on Mayowood, 827 Mayowood Rd SW.

This trip is hosted by Bruce & Nancy Rohde

## FOOD PACKING EVENT AT OSLC

Age: 10 to 100

What: We will be packing food packets for the Iambi Lutheran Palliative Care Program in Tanzania.

When: April 23, 9 – 12:00 noon

Where: **Our Savior's Lutheran Church, Rochester**

Why: This is a pilot project with Outreach (formerly Outreach Africa). Only the supplements will be packed, so that corn flour can be purchased from local mills in TZ to be added to the supplements in a similar packing event at Nkungi village in Tanzania. This is an exciting new way to be in accompaniment with our brothers and sisters in Tanzania.

## *New Life Intergenerational Event*

Sunday April 17 at 9:15 am

Enjoy the wonders of Jesus' resurrection and new life. We will have real live baby animals to pet, a scavenger hunt, crafts, AND...drum roll please...a "New Life" Selfie contest complete with prizes. You won't want to miss this!



SOLD! The annual OSLC youth auction and luncheon will be on Sunday, May 15. If you are interested in donating baskets, services, gift cards, or anything else, please let Emily Block know by May 8<sup>th</sup>! All donations are greatly appreciated!! Everyone is welcome to bid, eat, and enjoy. **You don't have to be present to win.** (Any questions may be directed to Emily Block:

[block.emily@mayo.edu](mailto:block.emily@mayo.edu) or 507-250-5769.)



## OUR SENIORS ARE GRADUATING!

We will host our Graduation Sunday Reception on May 22 between services. Please join us to celebrate our seniors as they prepare for the next step in their journey!



### **IT'S TIME TO PLAY BALL**

The OSLC youth will be playing Wednesday evenings with games starting between 6—8pm. We may have one or two evenings in which we play 2 games. The first game will be May 4, although schedules are not yet determined. Practice is voluntary, but encouraged. The first three practices will be Sunday afternoons at 1:00pm starting on April 17th at Slatterly Park. We

will always be done in less than 2 hours. The league tournament will be complete on or before Aug. 10. If you would like to play, please contact Glenn Leckband with the following information:  
Name, Phone Number, Email  
Need a Shirt? Y or N  
Size: S, M, L, XL, XXL

**Glenn's contact information is 884-6845 or [Leckband@us.ibm.com](mailto:Leckband@us.ibm.com)**  
The coaches goal is to make this a fun evening for all athletes of all caliber. We want to encourage everyone to participate, even if you have never played organized athletics before. Everyone is welcome!!

### **Middle School News**



Friday, April 15th is the middle school lock in. Your child is welcome to invite a friend. We have college students coming down from St. Olaf to lead the event.

Special Music:	Sr. Choir, directed by Ruth Benning
8:00am	
Acolyte:	Reece Flynn
Greeters/Offering:	Marie Nelson, Rosie Seegmiller
Communion Assistants:	Bruce & Tammy Olson
Ushers/Offering:	Rich & Sandy Pederson
Prayer Reader:	Katie Zahasky
Coffee Prep:	Byron & Darlene Stadsvold
Sound Board:	Sherry Rengstorf
10:30	
Acolyte:	Chase Tenner, Andrew McCumber
Greeters/Offering:	Jorrie Johnson, Wendy Moon
Communion Assistants:	Jorrie Johnson, Diane Dunbar, Wendy Moon
Ushers/Offering:	Todd & Andrew McCumber
Prayer Reader:	Wayne Servais
Coffee Clean-up:	Rita Balm
Sound Board:	Bob Westland
Offering Counters:	Tim & Jean Hornseth
Altar Guild:	Cindy Norgard, Sharon K. Peterson
Organists/Pianists:	Ruth Benning, Mandy Lambrecht, Bruce Rohde, Jan Matson

Sunday, April 10  
8:00am Worship  
9:15am Coffee Fellowship  
Education Hour

10:30am Worship  
Monday, April 11  
P. Ben off  
9:00am Naomi Circle  
Tuesday, April 12  
10:00am Bible Study  
11:30am Staff Meeting  
3:00pm P. Fred @ Dunn Bros. N.  
6:00pm HS Ministry  
6:30pm Business/Finance—Cancelled  
6:45pm Evangelism  
Wednesday, April 13  
9:00am Priscilla Circle  
9:30am Martha Circle  
4:30pm Fill backpacks  
5:00pm Confirmation  
5:45pm Meal

6:00pm MS Ministry  
6:30pm Worship  
7:20pm Senior Choir  
Thursday, April 14  
6:00am Promise Keepers  
8:30am Faithfully Fit  
6:30pm Grace Bells  
6:30pm Leadership  
Friday, April 15  
P. Fred off  
Middle School Lock-in  
9:00am Banner  
9:0am Bulletin Prep  
Saturday, April 16  
Sunday, April 17  
8:00am Worship  
9:15am Coffee Fellowship  
New Live Event  
10:30am Worship